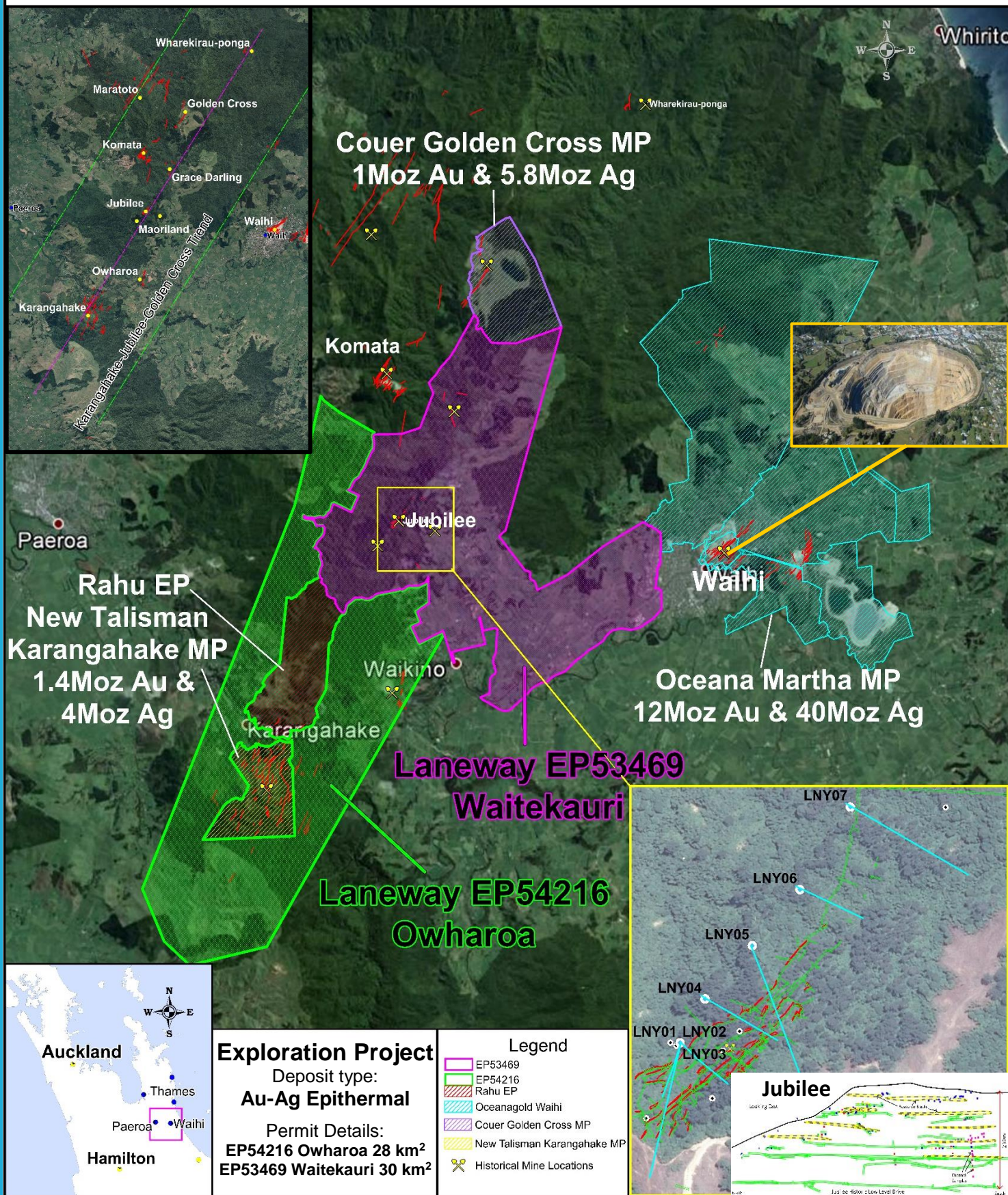


## Seeking Expressions of Interest: New Zealand Gold Project

Laneway Resources is seeking expressions of interest to farm-in to its New Zealand Exploration Permits





## Project Overview

Laneway's New Zealand tenure within the Hauraki goldfields district comprises two granted exploration permits covering approximately 58km<sup>2</sup>. The Permits are coincident to and surrounding the prospective mineralised corridor that is host to Oceana's Martha Mine (Waihi), New Talisman's Karangahake Mine and Couer's Golden Cross Mine. This region has yielded in excess of 65Moz of gold and silver from over 50 epithermal deposits.

Historical mining from the Waitekauri prospects around Jubilee produced over 33koz Au-Ag bullion averaging over 1oz/t Au. These prospects are now the focus of the next drilling program investigating, the potential along strike and down dip extensions of the previously mined zones which have not to date been tested using modern exploration techniques.

## Geology of the Hauraki Goldfield

The geology of the Hauraki goldfield consists of a block-faulted basement of Jurassic greywacke (Mania Hill Group) overlain by a thick sequence of andesite and lesser dacite (Coromandel Group), and rhyolite and ignimbrite (Whitianga Group). Based on known occurrences of gold-silver deposits in the goldfield, Andesite-hosted styles are considered the most prospective for future exploration, as they comprise about 95% of historical gold production. Gold and silver are generally localised within vein systems that range up to 30m wide, 800m long and up to 700m in depth. Rhyolite-hosted deposits are also potential targets but have produced less than 5% of historic gold production. Gold and silver occur in sheeted and stockwork quartz/chalcedony veins, breccia pipes and disseminated within hydrothermally altered wall rocks, typical of hot springs and low sulphidation epithermal gold deposits.



## Investment Highlights

- + Located in the highly prospective Hauraki Goldfield
- + Great neighbourhood – 65Moz bullion mined
  - + 3 +1Moz Gold deposits within 10km
- + Over \$5mill recently spent on the project
- + Several drill ready targets on freehold farmland
- + Drill ready sites – Jubilee
  - + sites fully permitted and prepared
  - + 8 holes totaling 3000m DDH
- + Jubilee plantation timber recently logged giving best surface access for over 20 years
- + Additional logging planned over next 2 years, exposing greater outcrop area and access
- + Extensive multi element geochemical data
  - + 1700 new samples recently collected
- + Recent drilling program completed primarily targeting new previously untested standalone coincident geophysical and geochemical target areas
  - + 14 holes for ≈ 6000m diamond core
- + Excellent IP coverage
  - + 31km new IP
  - + 30km reprocessed IP data
- + Known high grade vein systems
- + Project in good standing, recently renewed
  - + EP 53469 – Expiry Dec. 2021
  - + EP 54216 – Expiry Jan. 2023
- + Experienced epithermal field team available
- + Excellent landholder relationships
- + Significant high-grade mining areas with limited modern exploration
- + Historical non JORC resources
- + Historic mineralisation not depth tested
- + Modern site facilities located near a well serviced town and excellent road access
- + Local experienced drilling contractors
- + Potential for third party toll treatment of high grade ore parcels <30km to mill.
- + Recent resource upgrades by New Talisman at Karangahake and exploration successes & mine life extensions by Oceana around the Martha Mine attests to the significant remaining discovery potential of the area.
- + Growth potential for project.